

Country Presentation: Rwanda

Dr Richard SEZIBERA
Minister of Health
Ministry of Health, Rwanda



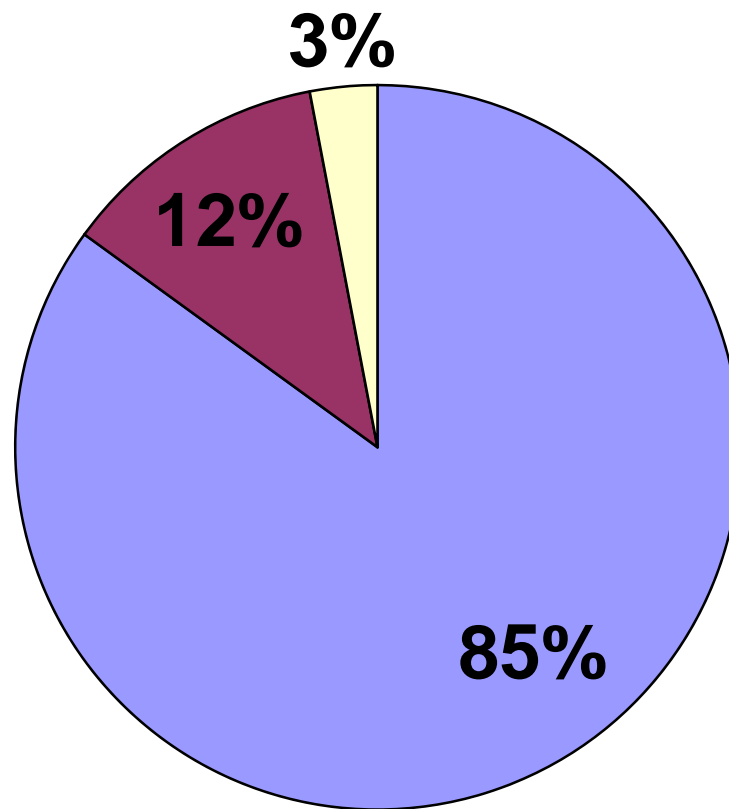
GAVI Alliance Board Meeting
2-3 June 2009, Washington DC



Macroeconomic situation

- Total population -9.1 m,
- Agro-based economy
- High GDP growth rate (11%, 2008) may slow down to 5% due to financial crisis
- On track to achieve MDGs 2, 3 & 6
- Nearly 52% of 08/09 budget will be financed through grants and loans
- Budgetary allocation to Health Sector in 08/09 was 11.5%

Distribution of health sector budget



■ District 85% ■ National hospitals and other Institutions 12% ■ Ministry of health 3%

Health sector reforms

- Strong investment through public subsidies in preventive interventions of major public health diseases;
- Universal access to care for all people living in Rwanda through universal health insurance coverage;
- Performance based financing for public and faith based health facilities to improve the demand for preventive and curative services

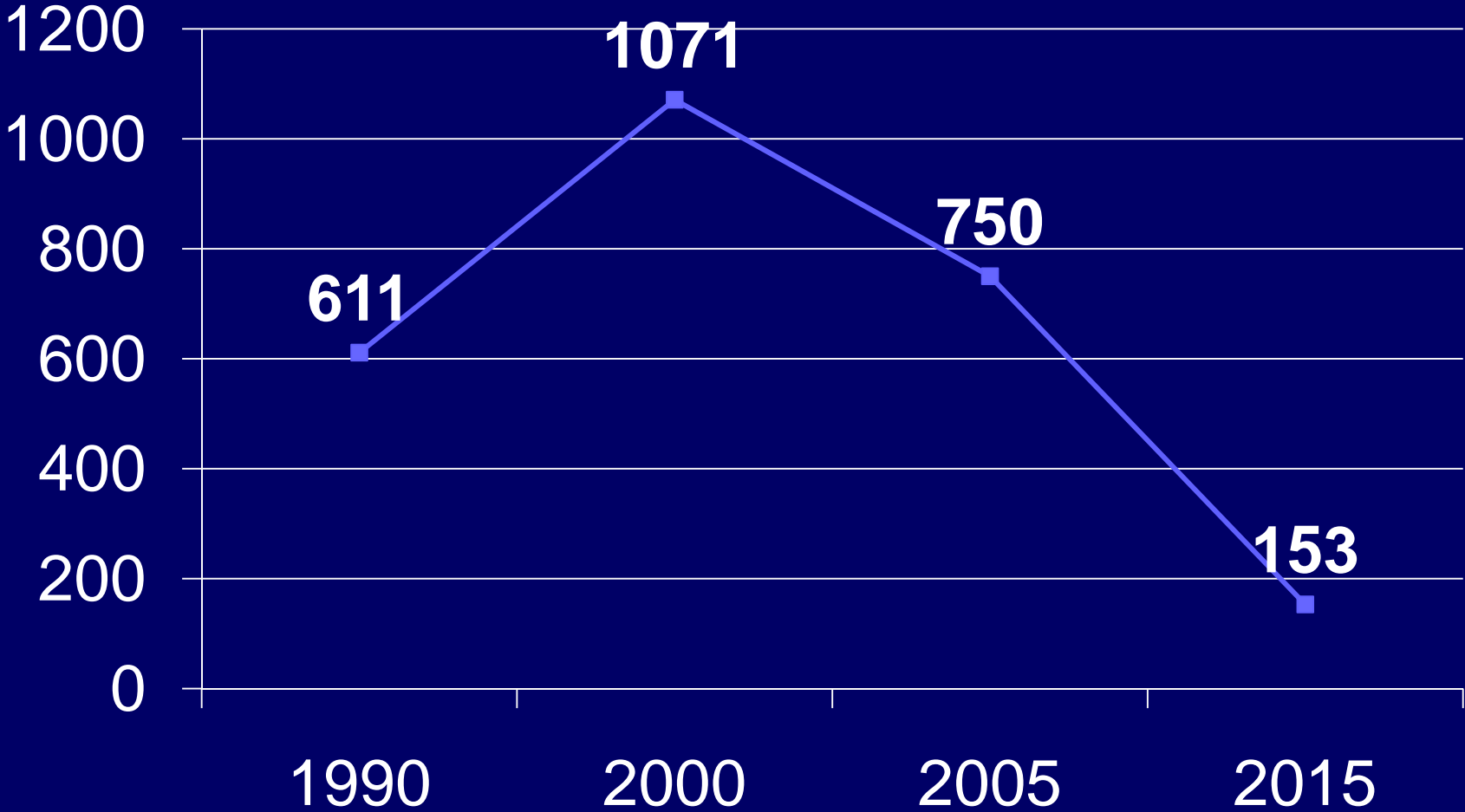
Performance based financing for health sector (PBF)

- Based on major bottlenecks;
- Prioritise composite indicators and avoid selective performance;
- Quantity of preventive interventions and quality of both prevention and curative services;
- Promotion of local creativity and spirit for performance;
- Improvement of remuneration of personnel and equipment linked to services to community:
ACCOUNTABILITY.

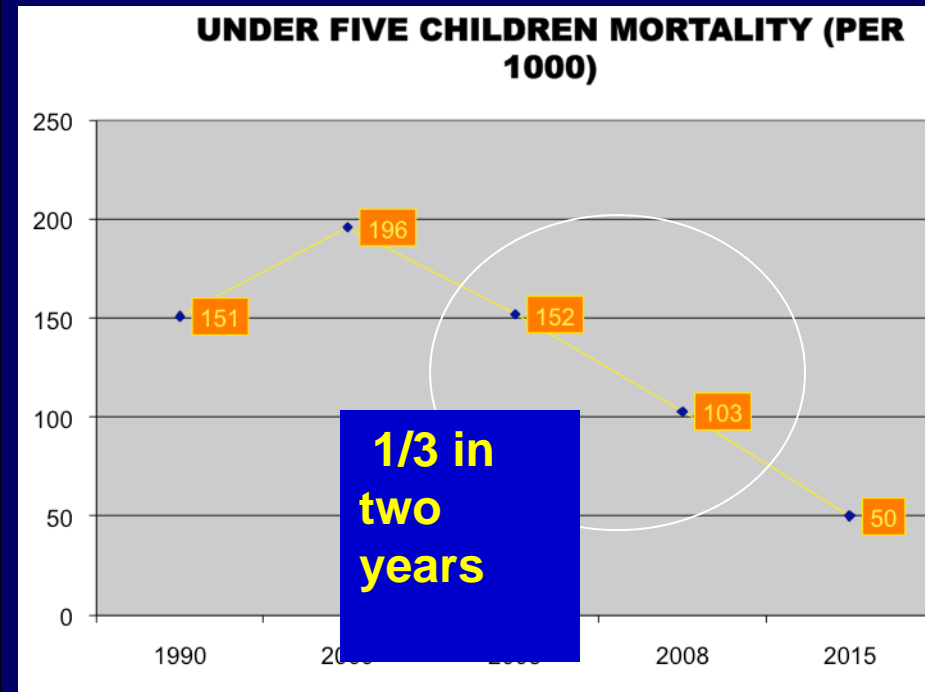
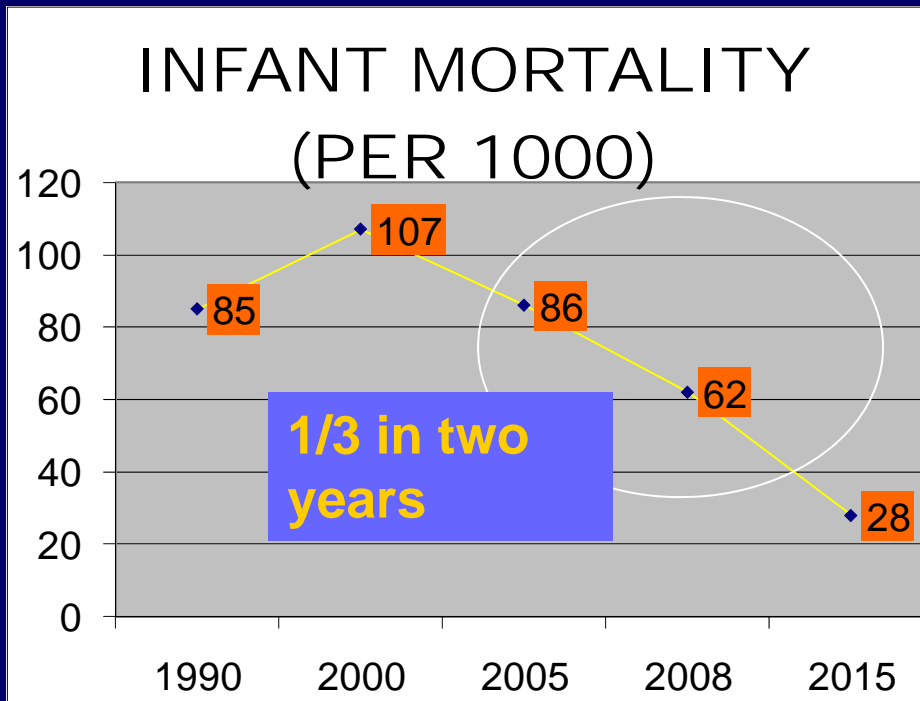
Achievements in health sector

- Decentralisation
 - Based on Bamako Initiative
 - Delegation of management
 - Health centres and hospitals fully autonomous
 - Subsidised by the government: PBF, needs based block grant (initially for wages)
 - Support to planning: Strategic and operational planning are the fundamentals of the approach
- Localisation of MDGs –
 - Community monitoring of MDGs 4 & 5

Reduction of maternal mortality



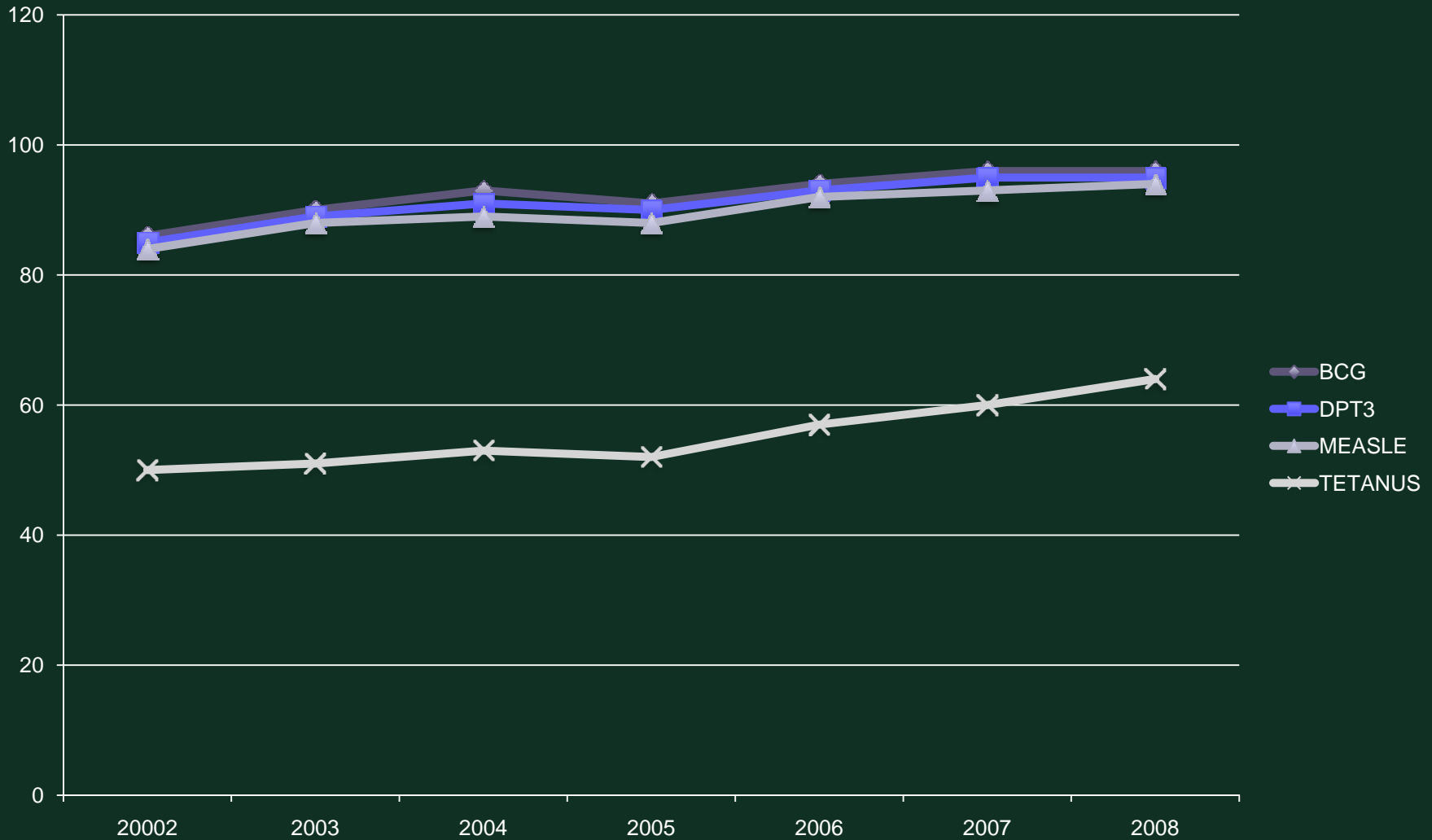
Reduction of child mortality



Summary

Data from DHS	1992	2000	2005	2007/8
Infant mortality	85/1000	107/1000	86/1000	62/1000
Under-five mortality	150/1000	196/1000	152/1000	103/1000
Maternal mortality	--	1071/100,000	750/100,000	not measured
Deliveries with skilled attendant	26%	31%	39%	53%
Contraceptive Prevalence Rate	13%	4%	10%	27%
Total fertility rate	6.2	5.8	6.1	5.5

Immunisation Coverage Rates (2002-2008)



Role of GAVI HSS support

- Support to Community Health Workers
 - Integrated training
 - Performance Based Financing
 - 80% of Health problems will be solved in community by sensitisation, prevention and basic care.
 - Decrease of vaccination drop out rate
- Out reach campaigns : Mother and Child Health Week

Role of GAVI HSS support -2

- Increase quality of care through :
 - Supply of equipments
 - Cold chain equipment
 - Incinerators
 - Reagents for lab surveillance
- Training of health professionals

Role of civil society in health care

- Network of parliamentarians for reproductive health : community mobilisation
- Women associations : mobilisation
- Rwanda Red Cross : health centre support
- Urunana development : mass media sensitisation through drama

Achievements of the Immunisation Programme

- High immunisation coverage rate (95% HMIS)
- Reduction of Morbidity and Mortality of vaccine preventable diseases
- Integration of other child survival services through immunisation services
- International and GAVI awards for high coverage

Remaining Challenges

1. Maternal and Child Health

2. Population growth

3. Nutrition

4. Health Financing

5. Human Resources for Health

6. Health system strengthening

7. Infrastructure

Conclusion

- Access like quality is a multi-faceted concept
- Challenge to reach universal coverage
- Strengthen decentralisation and integration in bid to improve service availability
- Reinforce capacity to provide quality services

Next Steps

- Rwanda expects to achieve MDG 4 & 5 by 2015 through
 - Strengthening HR resources: Pre service and In service training of Health workers
 - Implement more prevention interventions (mosquito-nets for all , hygiene, pneumococcal and rotavirus vaccine introduction),
 - Strengthen community and family health services; emergency maternal and neonatal care.